



PRESTIGE  
**OCEAN**  
CREST  
— DONA PAULA, GOA —

**The home in Goa** that you have always wanted, nestled in the classy locality of Dona Paula, overlooking the azure waters of the Arabian Sea.

Dona Paula is arguably the most high-profile location in Goa, with a history of luxury living that stretches back 300 years to 1774, when Da. Paula Amaral Antonia de Souto-Maio, after whom it is named, came to live here after marriage. Today, it is a plush and self-contained suburb of Panaji and a sought-after residential locale.

As a neighbourhood, Dona Paula provides you with all the social infrastructure and conveniences that your lifestyle demands. Well reputed schools, healthcare facilities, diverse premium dining out options and world class malls are a short drive away. Dona Paula is also extremely accessible. It is well connected to all parts of Goa by arterial roads, the airport is just over a half-hour's drive away and the railway station just fifteen minutes.



**Prestige Ocean Crest** offers you a choice of superb homes, with expansive balconies to enable you to bask in the bracing sea air, soak in the magnificent views of the waves and enjoy an al fresco sundowner. Built in the Classical style with fine elements of detail to add visual richness and grandeur to the external appearance, Prestige Ocean Crest is an address to be envied.

Prestige residential developments are distinguished by how they effortlessly facilitate and foster community living of the very highest standards. Today, more than fifty thousand families proudly say that have added Prestige to their lives and are happy and content in their Prestige dwellings. It is this differentiated quality of life that Prestige Ocean Crest brings to Goa. Here you will have at your command, a host of luxury amenities befitting your lifestyle including a Sea-View restaurant in 4th and 5th floor overlooking the sea for a high end dining experience, a roof top club house with gym and party areas and a swimming pool & sky deck facing the sea.



**Prestige Ocean Crest** is one of Prestige's pioneering residential developments in Goa. Rest assured that the future will see us develop more such communities here.

Turn the page to discover and explore luxury living like never before in Goa. Then talk to us to call it home!

**RERA NUMBER:**  
PRGO02201073



*BECAUSE YOU DESERVE THE PRIVILEGE  
OF BEING CLOSE TO EVERYTHING*

Your time is precious and Prestige Ocean Crest's brilliant location makes sure that reaching anywhere or going back home is a smooth and easy experience. It is eminently accessible through major arterial roads and within ready reach of all modes of transport.

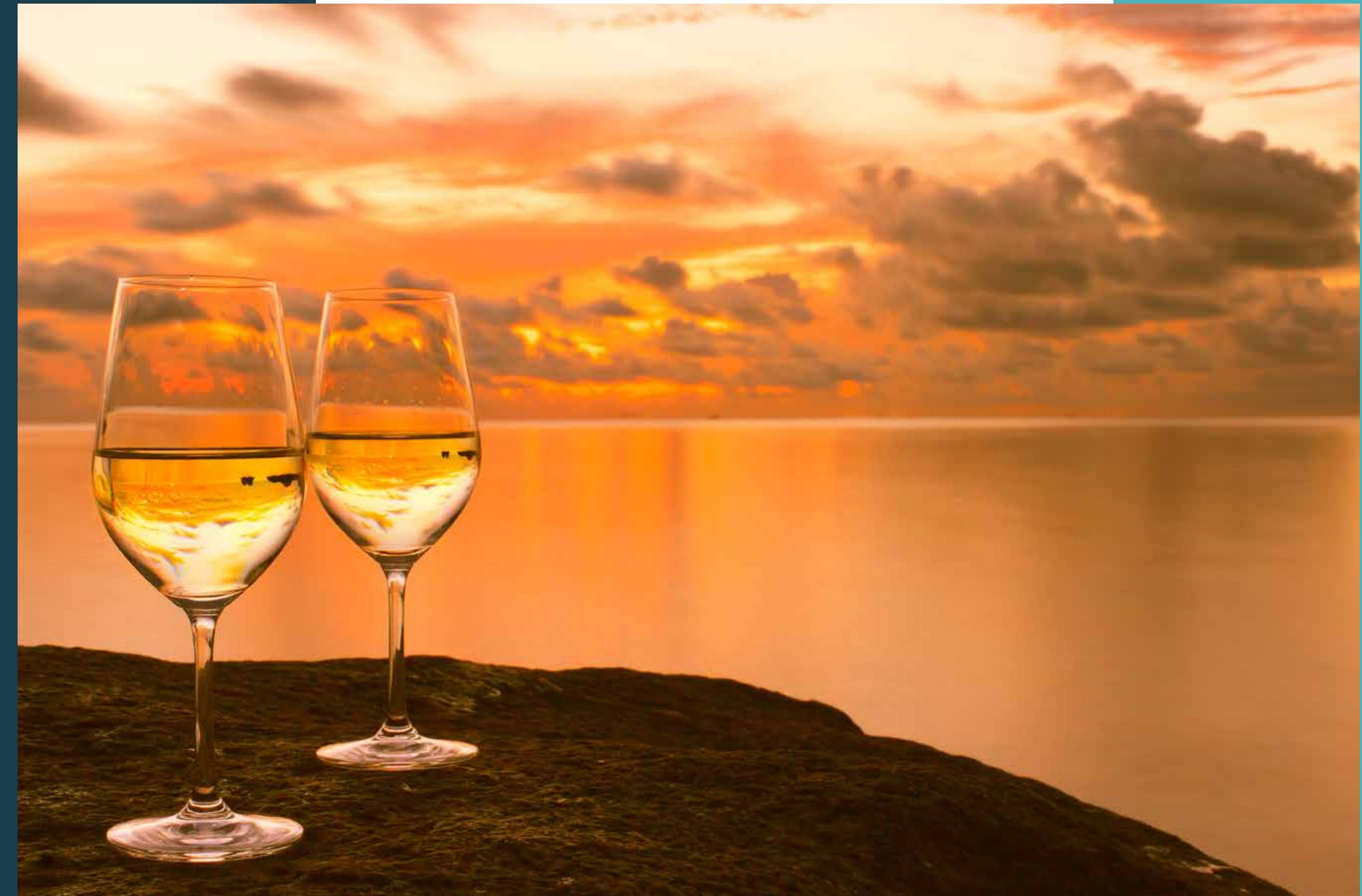


*BECAUSE THE BEST WAY TO HAVE FUN  
IS ON THE SPUR OF THE MOMENT*

You never know when the mood will seize you to let your hair down and indulge yourself a little. And when it does, Panaji's elite shopping hubs and entertainment zones are all just a quick hop away. That's the privilege of residing in Goa's most luxurious residence.

*OUTSIDE THE SUNKISSED HORIZON  
BECKONS, ON THE TABLE LUSCIOUS  
VIANDS TEMPT YOU*

Lean back, breathe in the salubrious sea air, soak in the breathtaking view of the waves as you tuck into delicacies served with aplomb in the Sea View Restaurant at Prestige Ocean Crest.





*LEISURELY LAPS 'NEATH AN  
AZURE SKY. VIGOROUS WORKOUTS  
IN CLIMATE-CONTROLLED  
COMFORT...WHATEVER CAPTURES  
YOUR HIGHNESS' FANCY*

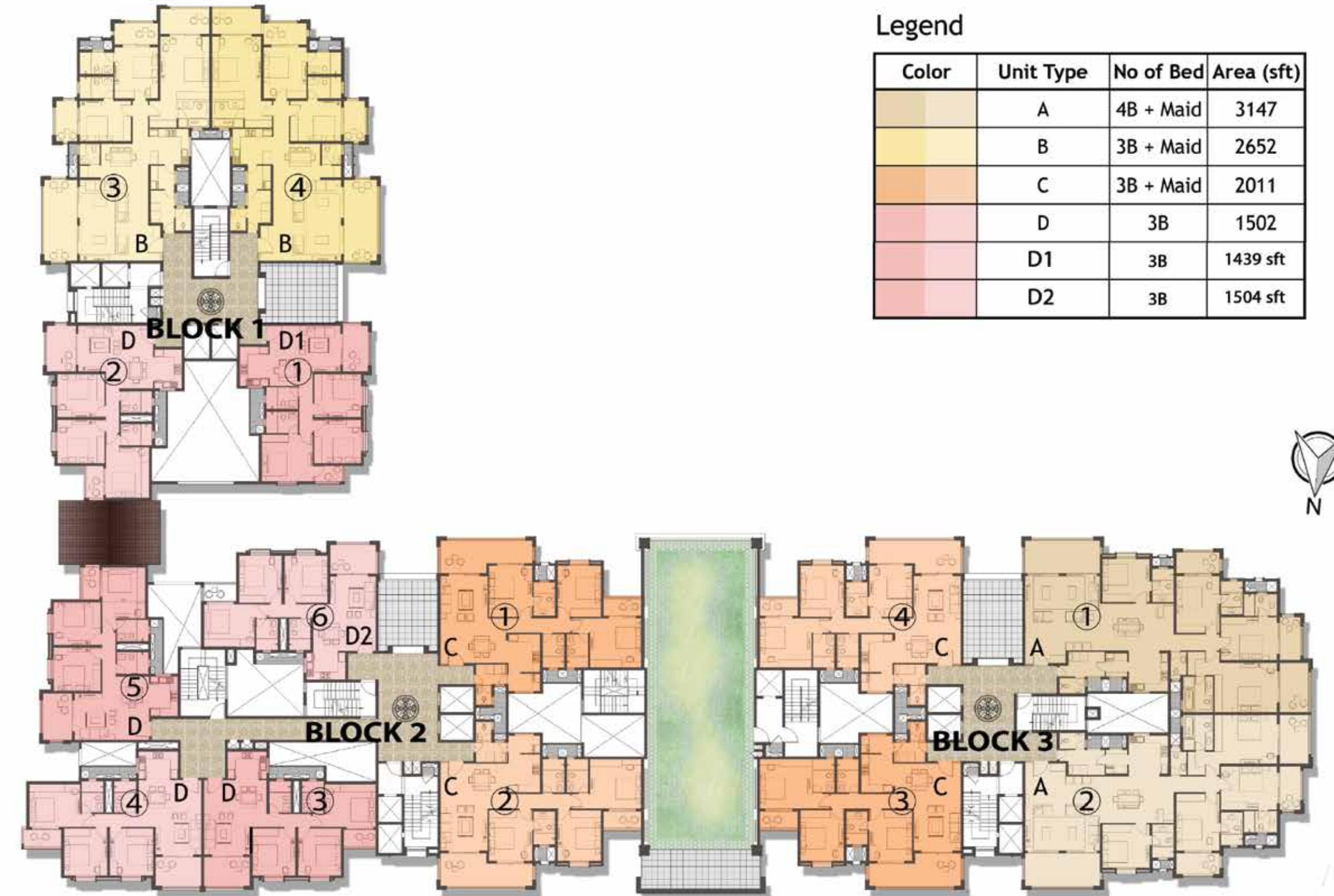
The legendary Grand Dame of Goa, Senora Dona Paula herself, would have loved to be a resident of Prestige Ocean Crest. Of such a rare excellence are the many amenities placed at your disposal, when the whim moves you.





# ELEVATED GROUND FLOOR PLAN

# FIRST FLOOR PLAN



EXTERIOR VIEW



Artist's impression

# 2ND FLOOR PLAN



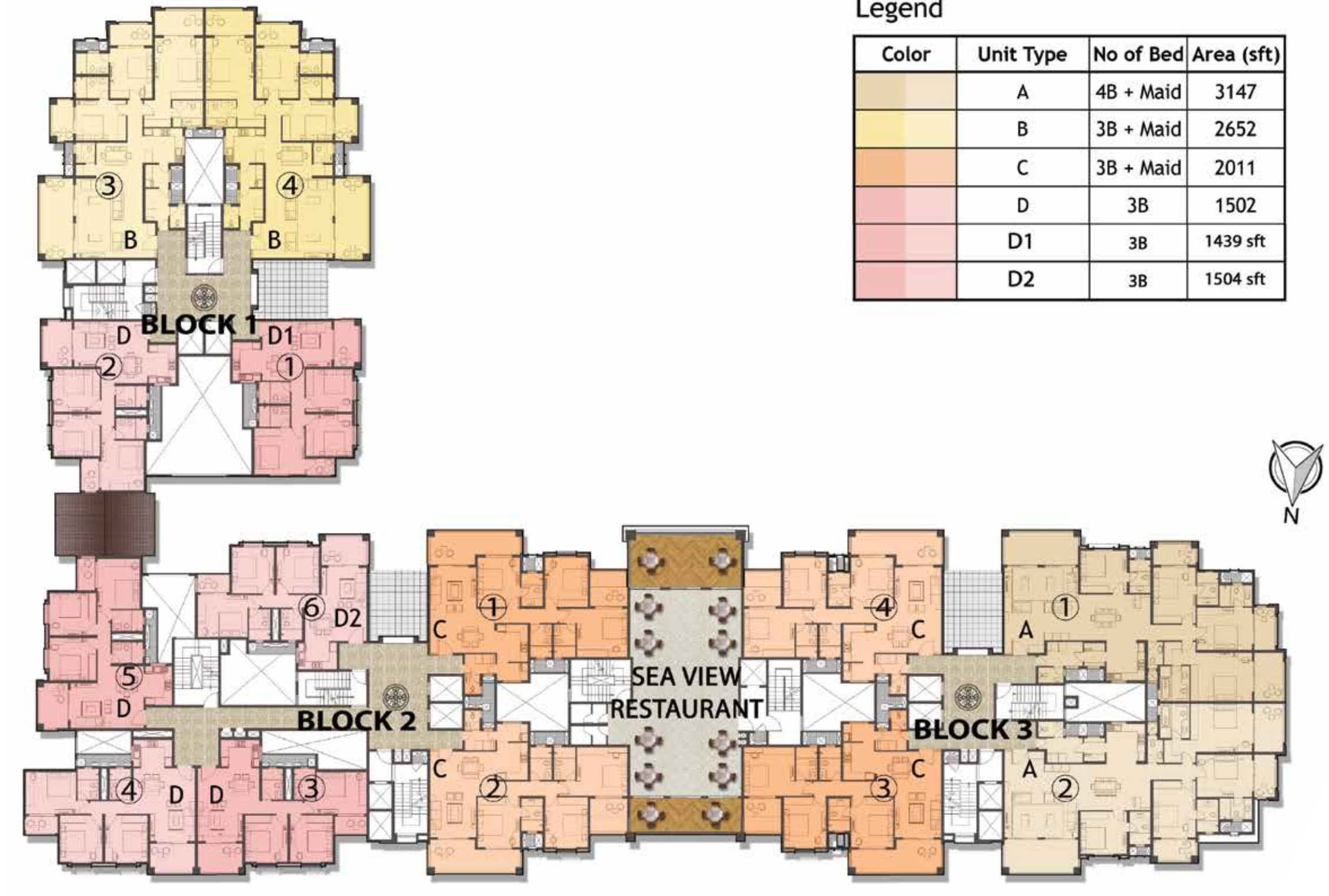
# 3RD FLOOR PLAN



# 4TH FLOOR PLAN



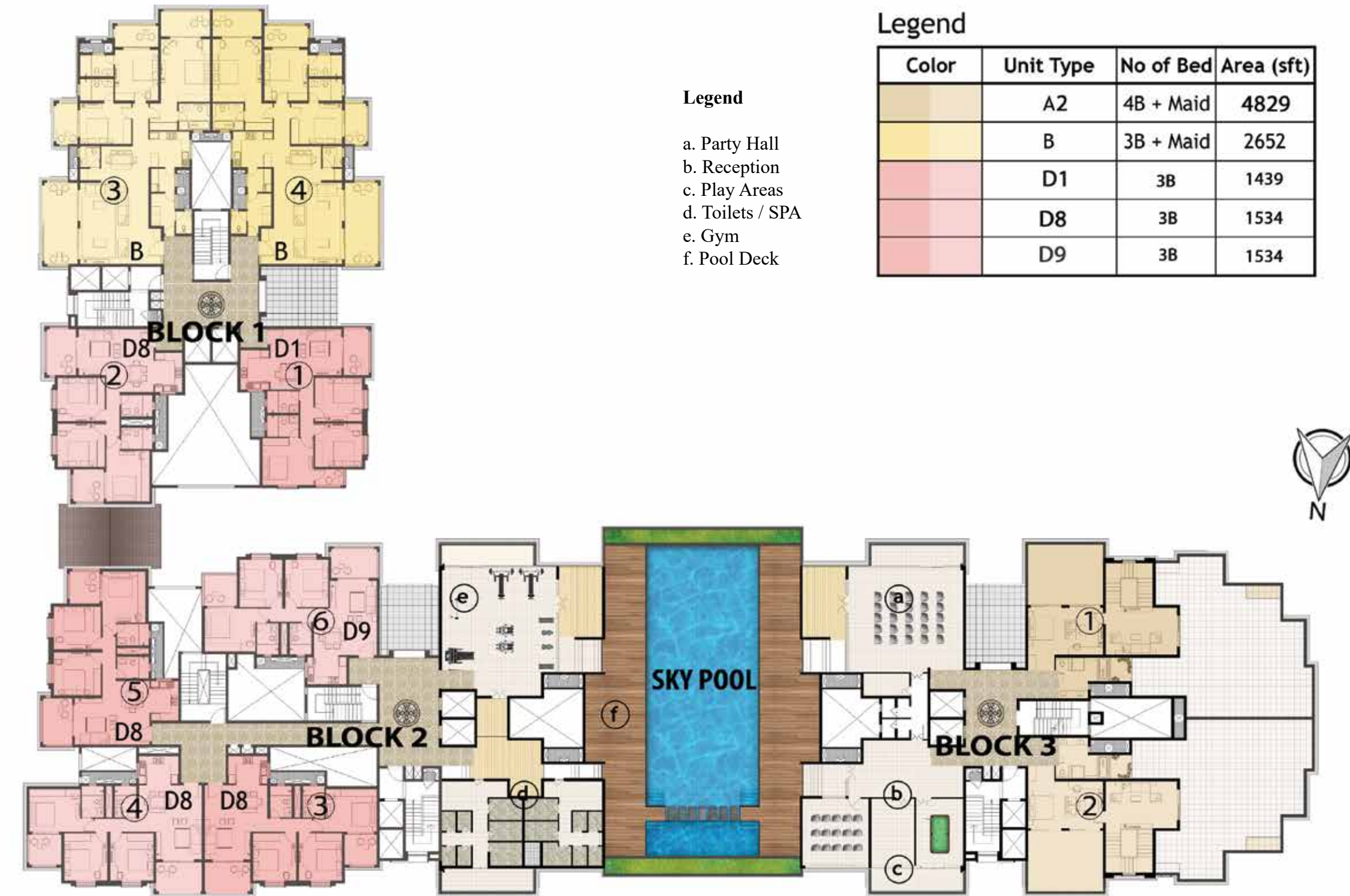
# 5TH FLOOR PLAN



# 6TH FLOOR PLAN



# 7TH FLOOR PLAN





*Artist's impression*

EXTERIOR VIEW

# UNIT PLAN - TYPE A - 4 BED+MAID

Block - 3  
Unit 01 & 02  
1st Floor to 5th Floor



# UNIT PLAN - TYPE A1 - 4 BED+MAID

Block - 3  
Unit 01 & 02  
Elevated Ground Floor



# UNIT PLAN - TYPE A2 - 4 BED+MAID (PENT)

Block - 3  
Unit O1 & O2  
6th & 7th Floor



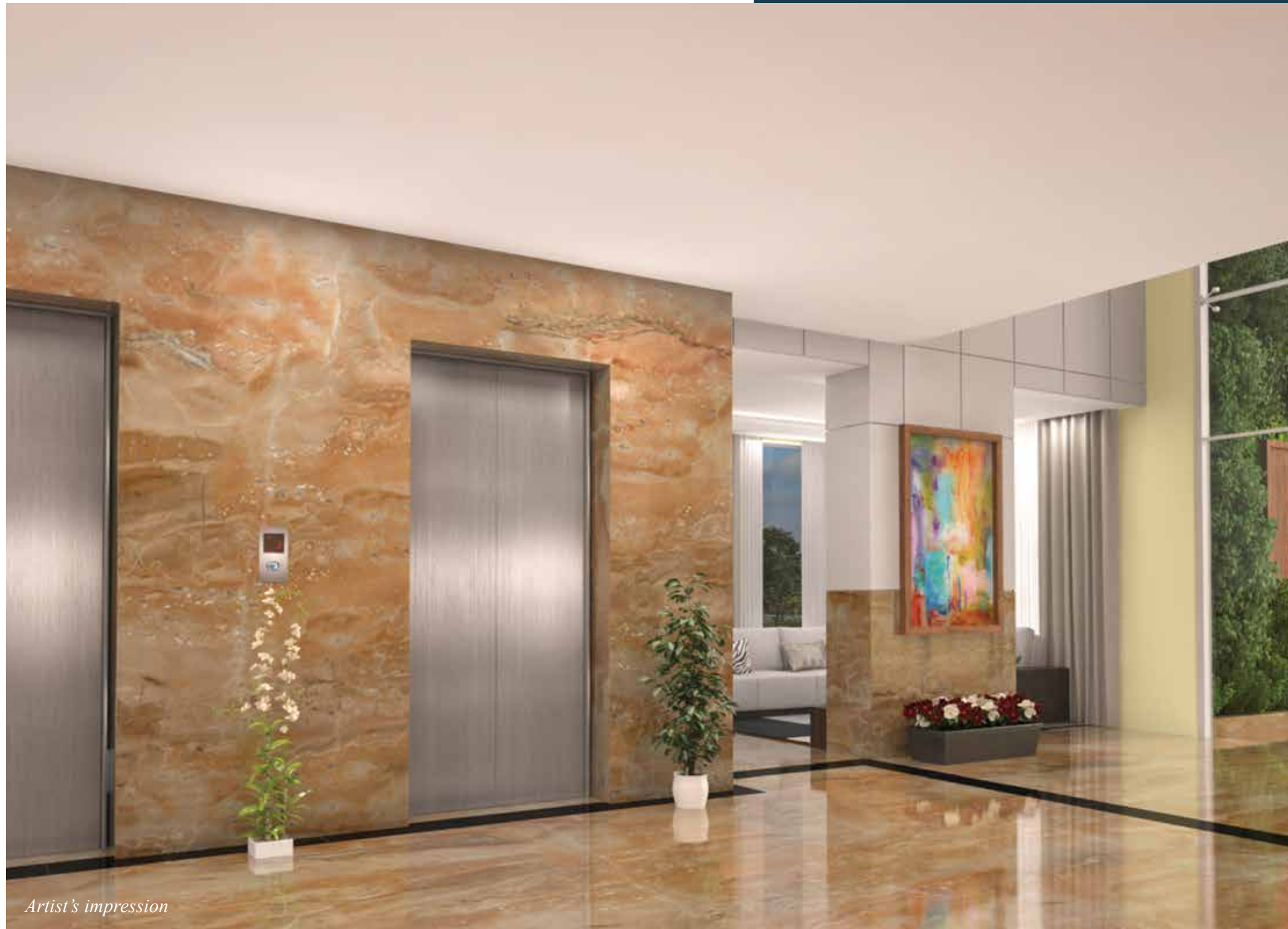
# UNIT PLAN - TYPE A2 - 4 BED+MAID (PENT)

Block - 3  
Unit O1 & O2  
6th & 7th Floor





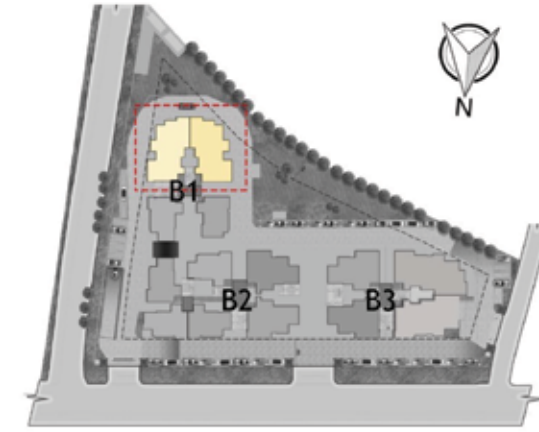
# LOBBY VIEW



Artist's impression

# UNIT PLAN - TYPE B - 3 BED+MAID

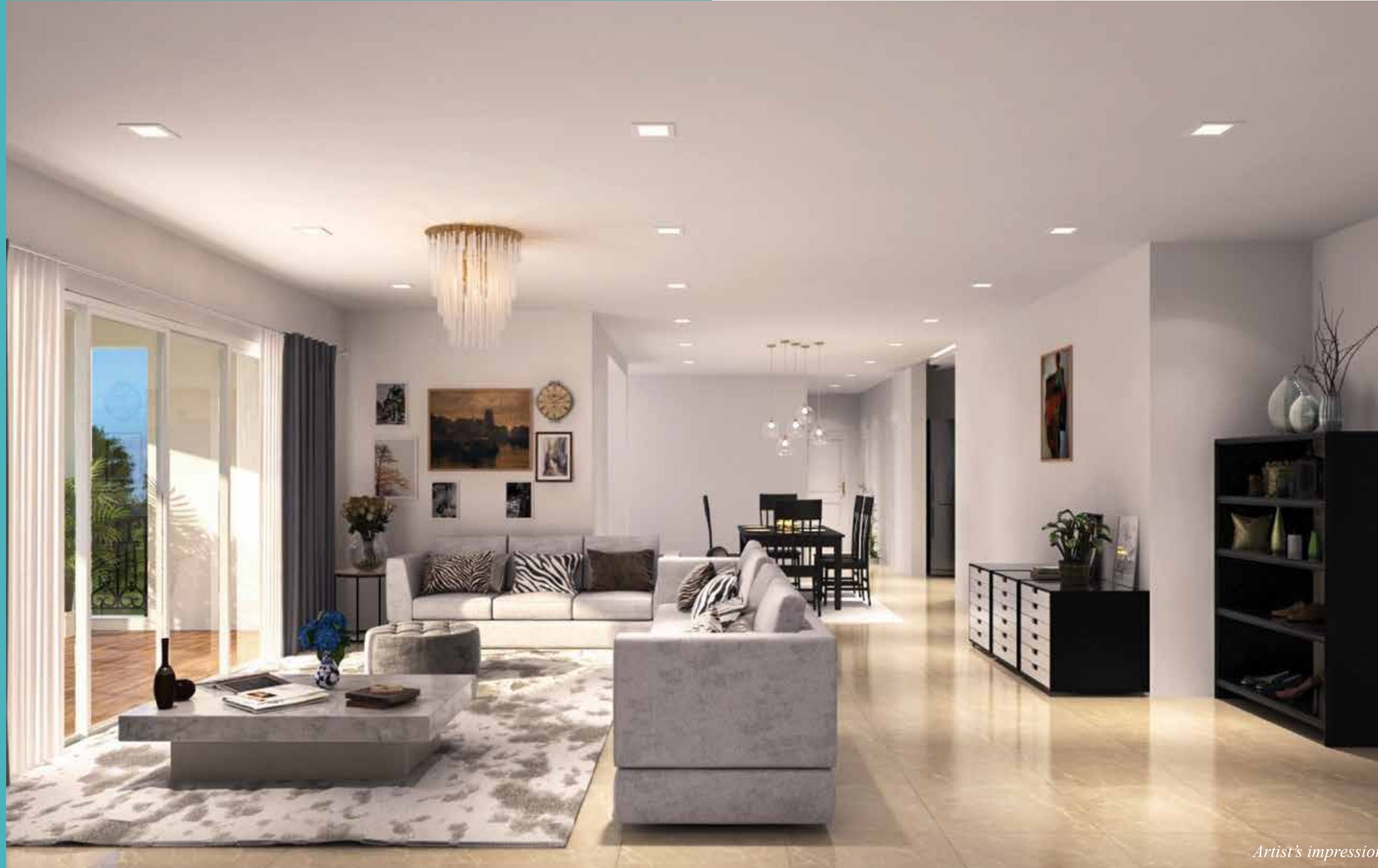
Block - 01  
Unit 03 & 04  
Elevated Ground Floor  
to 7th Floor



KEY PLAN

	SFT	SQM
SALE AREA	2652	246.377
CARPET AREA	1546	143.659

# LIVING

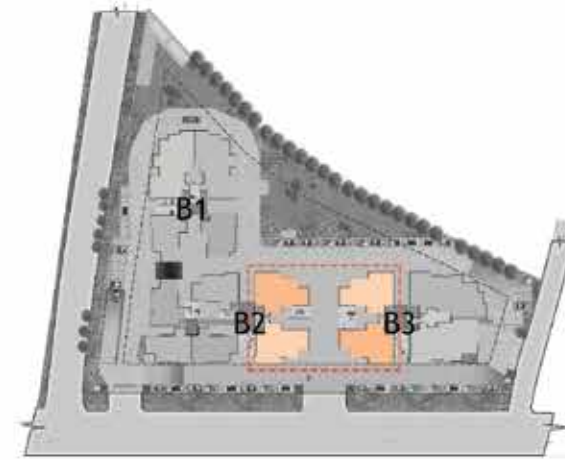


# UNIT PLAN - TYPE C - 3 BED+MAID

Block - 02 & 03

Unit 01 & 02 - Block 2 - 1st, 2nd, 3rd, 5th floor

Unit 03 & 04 - Block 3 - 1st, 2nd, 3rd, 5th floor



KEY PLAN

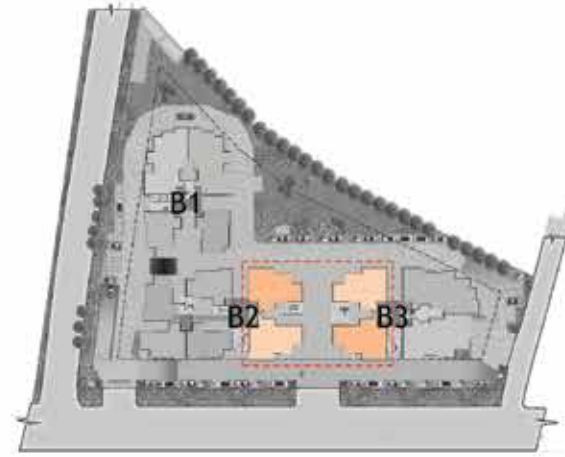
	SFT	SQM
SALE AREA	2011	186.826
CARPET AREA	1222	113.563

# UNIT PLAN - TYPE C1 - 3 BED+MAID

Block - 02 & 03  
 Unit 01 & 02 - Block 2 - Elevated Ground Floor  
 Unit 03 & 04 - Block 3 - Elevated Ground Floor



36



KEY PLAN

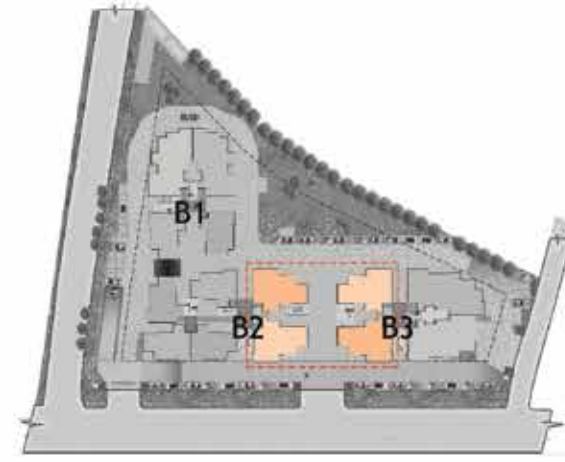
	SFT	SQM
SALE AREA	2098	194.878
CARPET AREA	1222	113.563
1/3rd TERRACE AREA	87	8.082

# UNIT PLAN - TYPE C2 - 3 BED+MAID

Block - 02 & 03  
 Unit 01 & 02 - Block 2- 4th Floor  
 Unit 03 & 04 - Block 3 - 4th Floor



37

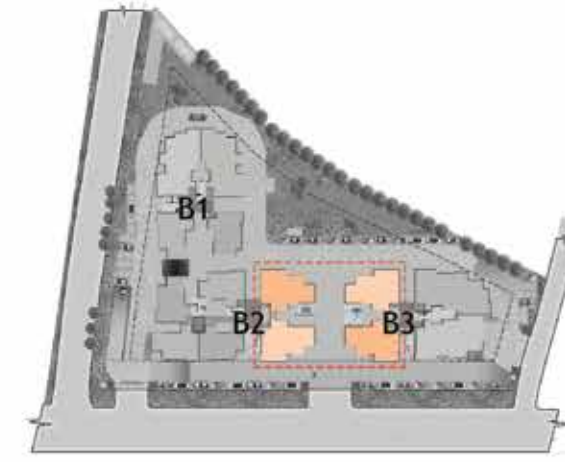


KEY PLAN

	SFT	SQM
SALE AREA	2026	188.251
CARPET AREA	1222	113.563
1/3rd TERRACE AREA	15	1.394

# UNIT PLAN - TYPE C3 - 3 BED

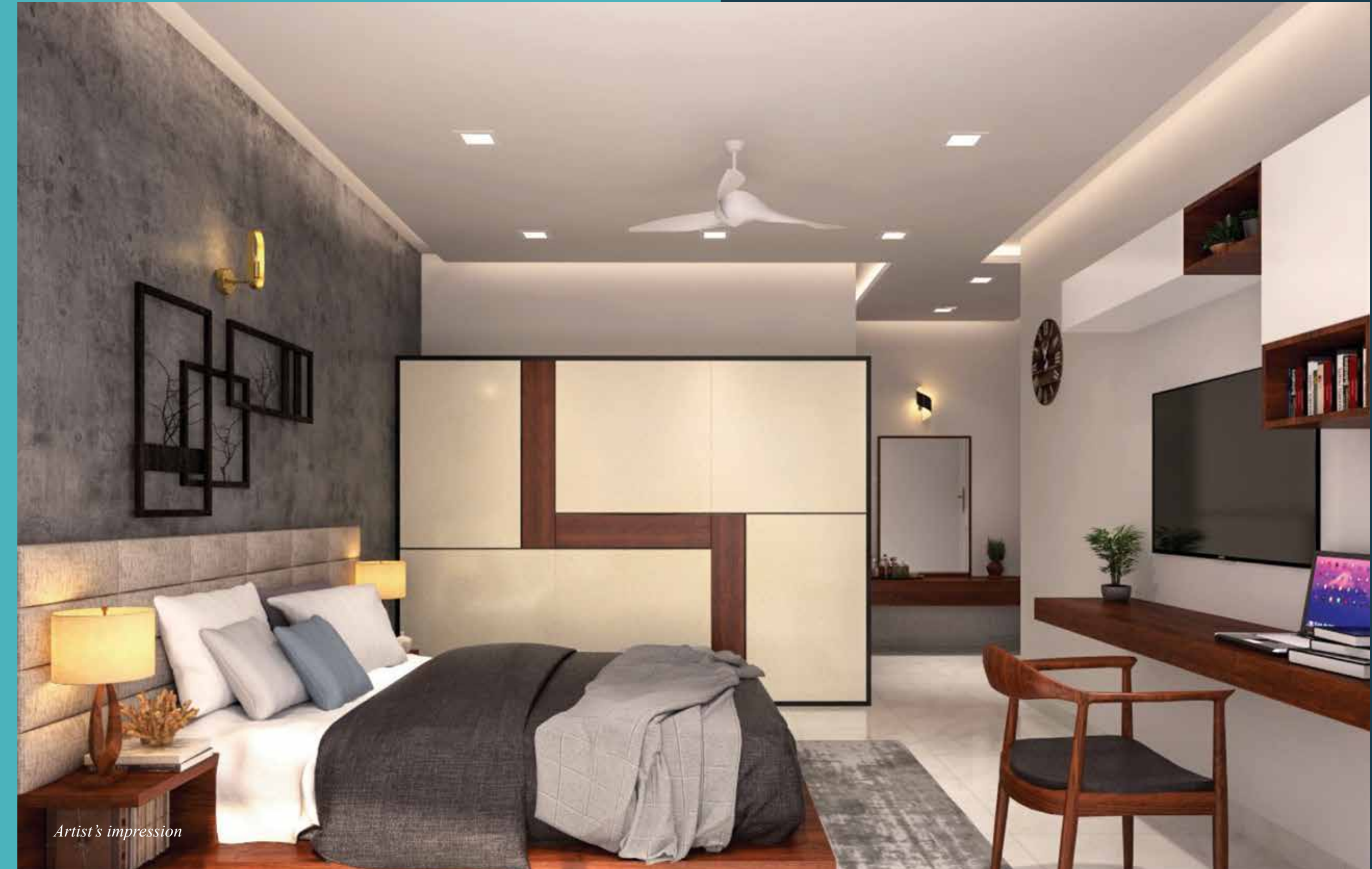
Block - 02 & 03  
 Unit 01 & 02 - Block 2 - 6th Floor  
 Unit 03 & 04 - Block 3 - 6th Floor



KEY PLAN

	SFT	SQM
SALE AREA	2069	192.215
CARPET AREA	1222	113.563

# BEDROOM



Artist's impression

# KITCHEN

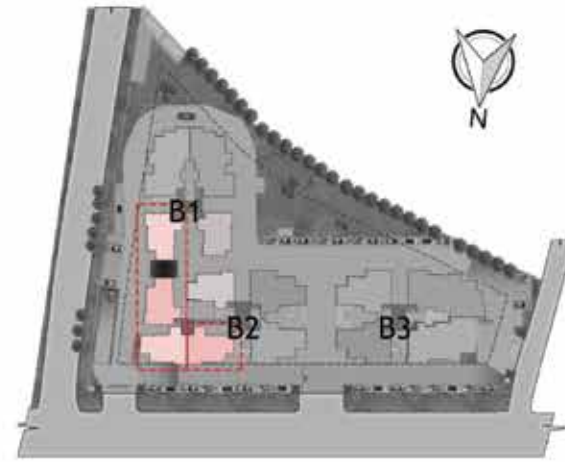


# UNIT PLAN - TYPE D - 3 BED+2T

Block - 01 & 02

Unit 02 - Block 01 - 1st, 2nd, 4th, & 5th floor

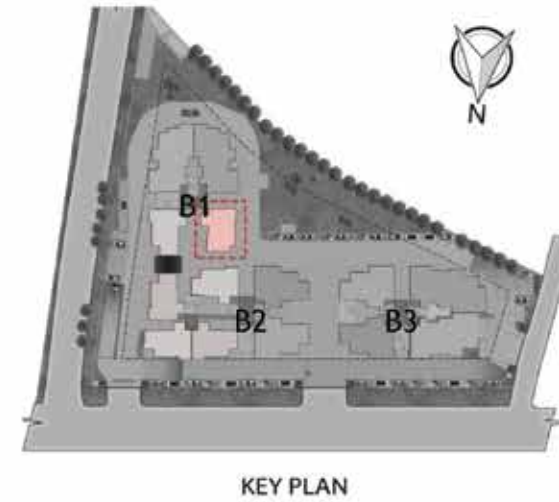
Unit 03,04,05 - Block 02 - 1st, 2nd, 4th, & 5th floor



	SFT	SQM
SALE AREA	1502	139.539
CARPET AREA	932	86.557

# UNIT PLAN - TYPE D1 - 3 BED+2T

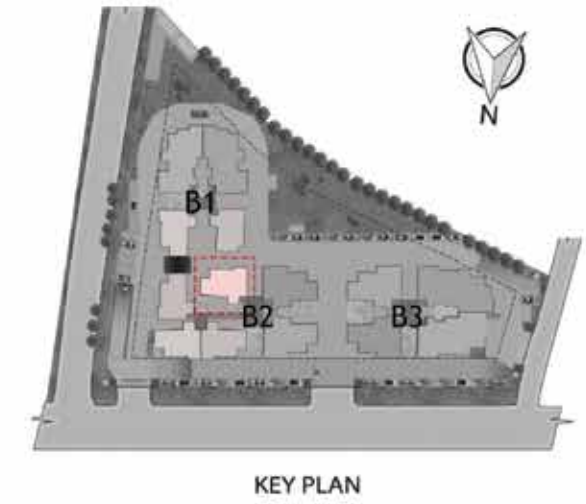
Block - 01  
Unit 01  
Elevated Ground Floor to 7th Floor



	SFT	SQM
SALE AREA	1439	133.691
CARPET AREA	922	85.649

# UNIT PLAN - TYPE D2 - 3 BED+2T

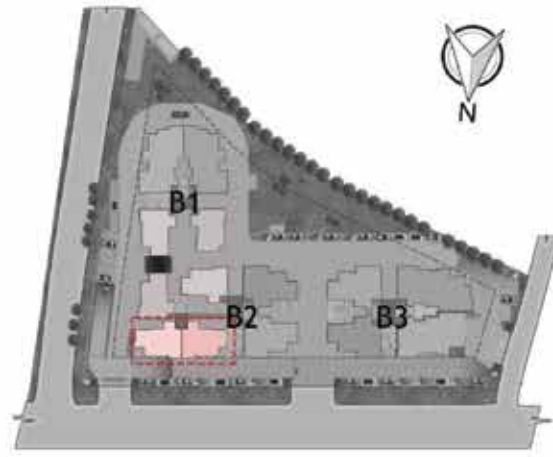
Block - 02  
Unit 06 - 1st, 2nd, 4th, & 5th floor



	SFT	SQM
SALE AREA	1504	139.698
CARPET AREA	933	86.654

# UNIT PLAN - TYPE D3 - 3 BED+2T

Block - 02  
Unit 03 & 04 - Elevated Ground Floor

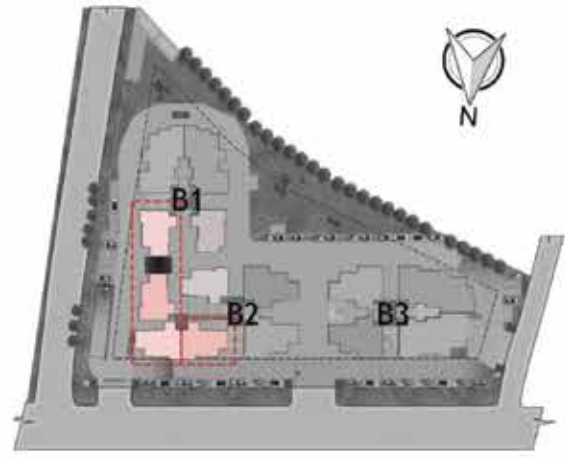


KEY PLAN

	SFT	SQM
SALE AREA	1538	142.912
CARPET AREA	932	86.557
1/3rd TERRACE AREA	48	4.459

# UNIT PLAN - TYPE D4 - 3 BED+2T

Block - 01 & 02  
Unit 02 - Block 01 - Elevated Ground Floor & 3rd Floor  
Unit 03,04,05 - Block 02 - 3rd Floor  
Unit 05 - Block 02 - Elevated Ground Floor

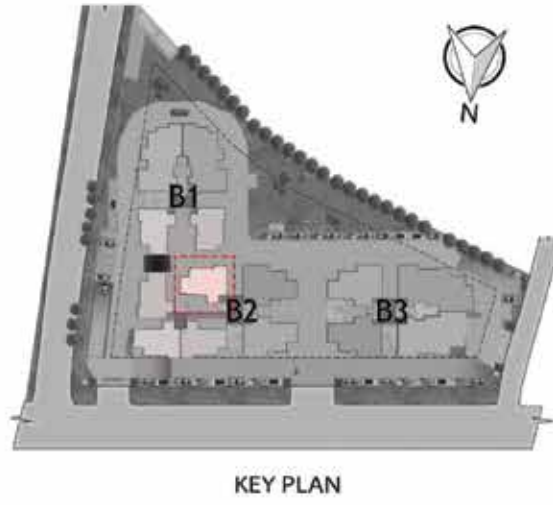


KEY PLAN

	SFT	SQM
SALE AREA	1521	141.341
CARPET AREA	932	86.557
1/3rd TERRACE AREA	19	1.765

# UNIT PLAN - TYPE D5 - 3 BED+2T

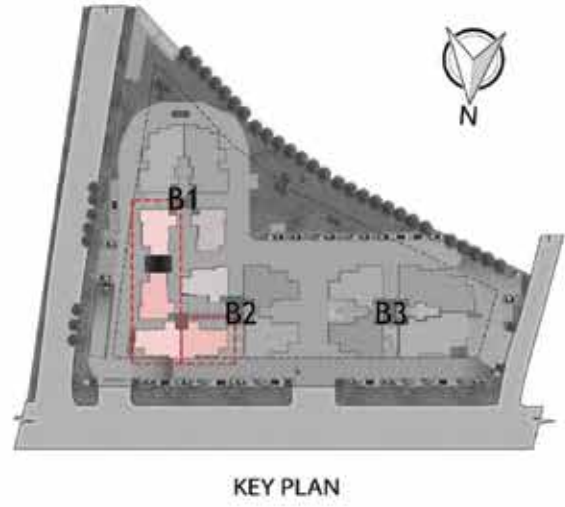
Block - 02  
Unit 06  
Elevated Ground Floor & 3rd Floor



	SFT	SQM
SALE AREA	1523	141.461
CARPET AREA	933	86.654
1/3rd TERRACE AREA	19	1.765

# UNIT PLAN - TYPE D6 - 3 BED+2T

Block - 01 & 02  
Unit 02 - Block 01 - 6th Floor  
Unit 03,04,05 - Block 02 - 6th Floor

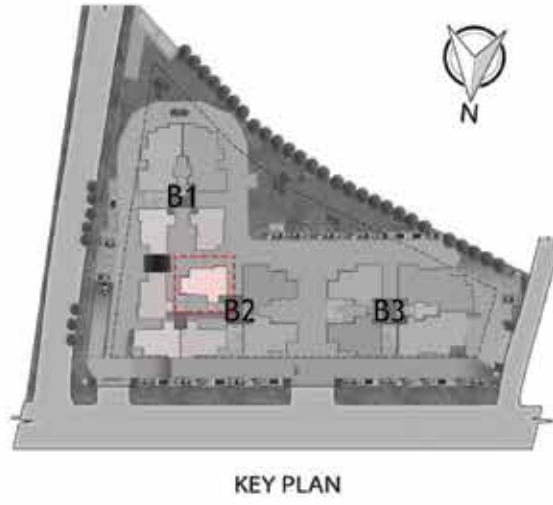


	SFT	SQM
SALE AREA	1574	146.250
CARPET AREA	932	86.557



# UNIT PLAN - TYPE D7 - 3 BED+2T

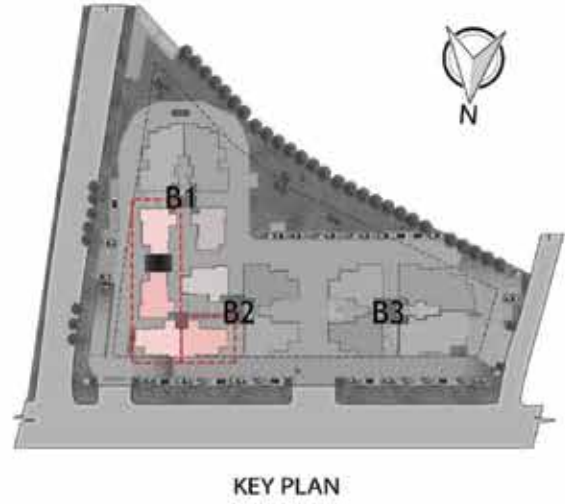
Block - 02  
Unit 06 - 6th Floor



	SFT	SQM
SALE AREA	1576	146.370
CARPET AREA	933	86.654

# UNIT PLAN - TYPE D8 - 3 BED+2T

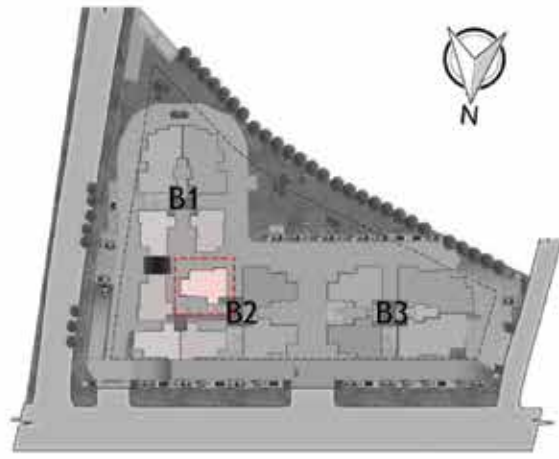
Block - 01 & 02  
Unit 02 - Block 01- 7th Floor  
Unit 03,04,05 - Block 02 - 7th Floor



	SFT	SQM
SALE AREA	1534	142.489
CARPET AREA	932	86.557

# UNIT PLAN - TYPE D9 - 3 BED+2T

Block - 02  
Unit 06 - Block 02 - 7th Floor



KEY PLAN

	SFT	SQM
SALE AREA	1534	142.489
CARPET AREA	932	86.557

# SWIMMING POOL



Artist's impression

# CLUB HOUSE - PLAN

Club House - 7th Floor



# LOCATION MAP





### Prestige Ocean Crest

Plot No. 249/1- A, Dr. E Borges Road, Opposite NIO Colony,  
Dona Paula Taleigao , Tiswadi Goa-403206

### Prestige Estates Projects Ltd.

Prestige Falcon Towers, No.19, Brunton Road, Bengaluru - 560025, Karnataka  
Ph: 080 - 25591080, Fax: 080 - 25591945, E-mail: [properties@prestigeconstructions.com](mailto:properties@prestigeconstructions.com)  
[www.prestigeconstructions.com](http://www.prestigeconstructions.com)



Like us on Facebook • Follow Us on Twitter • Make sure you visit The Falcon Blog for the latest at Prestige.

New York Sales Center: Indehaus, [www.indehaus.com](http://www.indehaus.com)

• Bengaluru • Chennai • Goa • Hyderabad • Kochi • Mangaluru • Mysuru

This brochure is conceptual and has been prepared based on the inputs provided by the Project Architect, this may vary during execution, the Promoter reserves the right to change, alter, add or delete any of the specifications mentioned herein based on site conditions and construction exigencies without prior permission or notice. The external color schemes and detailing of landscape may vary as may be suggested by the Architect considering the site conditions.

The furniture shown in the plans is only for the purpose of illustrating a possible layout and does not form a part of the offering or specifications. All Apartment interior views do not depict the standard wall, color & ceiling finishes which are not part of the offering.

Further, the dimensions mentioned do not consider the plastering thickness and there could be marginal variation in carpet areas.

A Prestige Group and Mathias Construction Pvt. Ltd. Joint Development